

# Ever Art Wood<sup>®</sup> Express Aluminium Cladding

The warmth of wood in a weather resistant, interlocking panel.



covet<sup>®</sup>



Title:


**Ever Art Wood® Express**

Rev:

**9**

Current as @:

**03/2024:****Product Overview**

Sheet Composition	5000 series aluminium sheet + 0.2mm decorative printed, exterior grade polymer film applied to surface.			
Sheet Finish	Cut edges are not film-wrapped and aluminium edges are visible.  Made to order flashings in same finish, available in 2 standard lengths.  Timber look finishes, wood grain runs length of sheet. View colour palette - covet.com.au.			
Sheet Dimensions	Thickness		Size	Weight
	2.2mm	2.0mm aluminium + 0.2mm polymer film	W1000 x L2000mm W1200 x L2400mm	5.56 kg/m <sup>2</sup>
	3.2mm	3.0mm aluminium + 0.2mm polymer film	W1000 x L2000mm W1200 x L2400mm	8 kg/m <sup>2</sup>
	1.0mm	0.8mm aluminium + 0.2mm polymer film	W1200 x L4500mm Custom length available.	2.35 kg/m <sup>2</sup>
Protection	Panels protected with adhesive film to decorative finish for transportation and handling.			
Country of origin	Japan			
Manufacturer's Quality Systems	Factories ISO 9001 certified CE Certified EN1090 and EN15088			
Test Facilities	MTS, AWTA, Ignis Labs, JECTEC are Accredited Testing Laboratories			
Fire Testing	Standard	Test Result		Testing Origin
	AS/NZ 1530.3	Index 0 (spread of flame)		AWTA, Australia
	AS/NZ 3837-1998	Group 1		AWTA, Australia
	ASTM E84-20	Class A Certification - Standard Test Method for Surface Burning Characteristics of Building Materials		JECTEC, Japan
UV Testing	Standard	Test Chamber	Hours	Testing Origin
	SAE J1960-2004 Society of Automotive Engineers	Xenon Arc - Atlas Ci4000 Xenon Weather-ometer	9648 / 10,000KJm <sup>2</sup>	AWTA, Australia
	ASTM G154	QUV – Accelerated Outdoor Evaluation	8000	Australia
	JIS K 5600	Sunshine Weather-ometer SUGA S80	10,000	Japan
	SAE J2527 / ISO4892-2	Xenon Arc Atlas Ci400 Xenon Weather-ometer	10,000KJm <sup>2</sup>	India
Salt Fog Resistance	Standard	Appearance Assessment		Testing Origin
	ASTM B117-2018	Blistering	Nil	AWTA, Australia
		Base Metal Corrosion	Nil	
		Loss of Adhesion	Nil	
		Other abnormalities	Nil	
		Exposure Period	500 hours	

Light Reflectance Value (LRV)	Standard	Test Result (CIE Tristimulus Value Y – Mean Results)				Testing Origin
	BS 8493-2008 + A1-2010	Burakku Suchi-ru	6.98	Neikiddo Moku	19.36	AWTA, Australia
		Burakku Erumu	6.13	Riigaru Oku	17.76	
		Chakooru Gurei	6.81	Kuri Masame	20.50	
		Kakicha	5.77	Biera Oku	33.87	
		Kurocha	6.23	Buraun Gurei	25.89	
		Burakku Eboni	7.24	Kurashikku	39.83	
		Weebu Mahogani	10.63	Oku	38.10	
		Buraun Eboni	10.12	Supuringu Oku	47.75	
Cleaning and maintenance	<p>It is recommended that environmental dust and bird droppings are cleaned off the Ever Art Wood® surface on a regular basis to keep the surface in good condition. Clean with clean water via a hose or pressure washer (i.e. Karcher) at no closer than 1 metre to prevent mechanical abrasion. For stubborn marks try a non-abrasive cloth (i.e. sponge or microfiber and a well diluted neutral detergent) please consult the supplier.</p> <p>Coastal projects (i.e. within 500mtrs of a saltwater environment) should be hosed down with clean water at least every 3 months.</p>					
Warranty	<p>10 year manufacturer's warranty against surface delamination, warping and significant fading. Manufacturer's warranty available upon request.                  Manufacturer's warranty does not cover product that has been fabricated or folded by third parties.</p>					
Sustainability	<p>Aluminium is 100% recyclable and retains its properties indefinitely. Sustainability advantages of Ever Art Wood® include:</p> <ul style="list-style-type: none"> <li>• No removal of trees</li> <li>• No chemical maintenance or treatments – such as wood primers and stains, paints, insecticides etc.</li> <li>• Long-lasting material replacement due to deterioration</li> <li>• Aluminium is recyclable</li> <li>• Lightweight – savings in infrastructure</li> <li>• Lightweight - less transportation</li> <li>• No batch to batch variability</li> <li>• Minimal waste in manufacture (compared to milling timber)</li> <li>• Minimal site waste – all panels and battens can be cut to length in Japan.</li> </ul>					



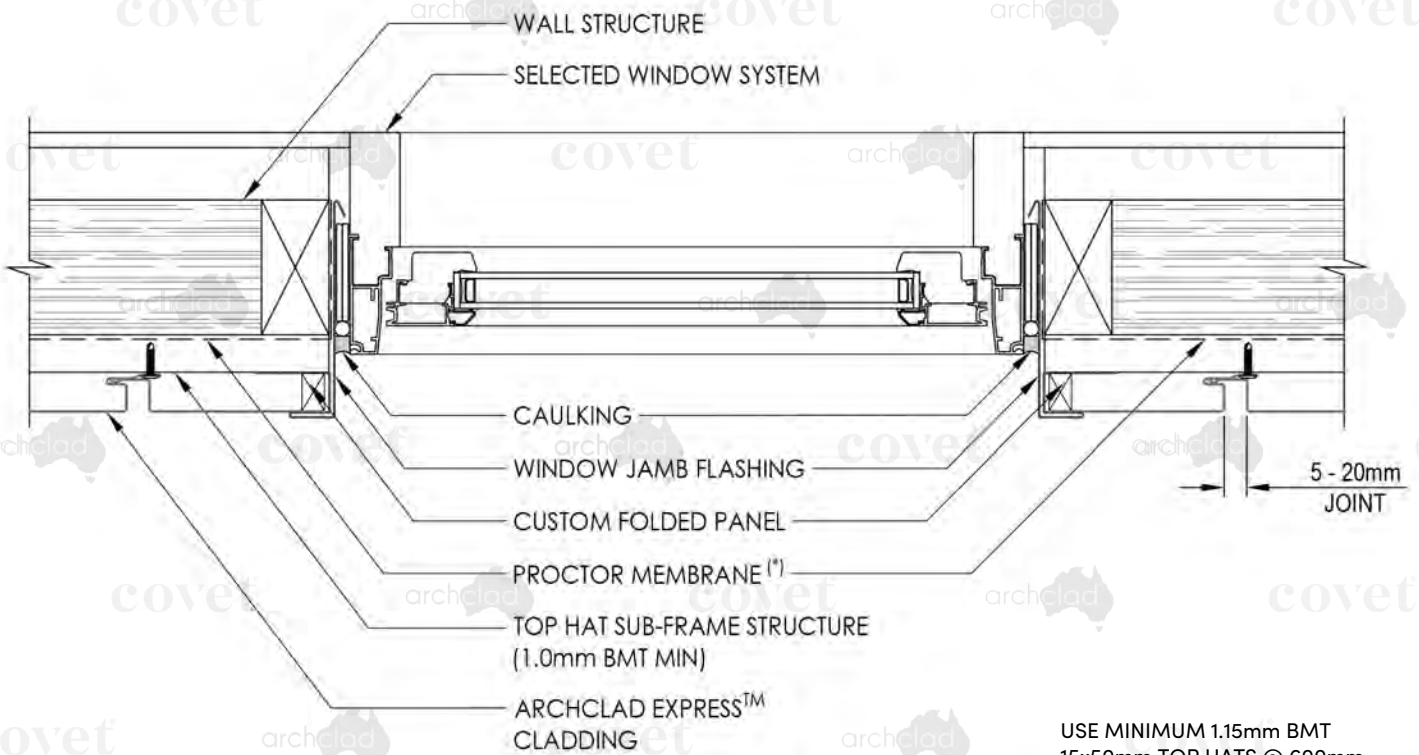
**DISCLAIMER** - The information provided in this technical documentation has been sourced through independent testing of the Ever Art Wood product from accredited authorities and is accurate at the time of publication. The purpose is to provide you general information about the Ever Art Wood product, and does not constitute project specific building, construction or fire safety advice. Always defer to the Industry Standards, qualified engineers and certifying bodies. For further information about Ever Art Wood products or to discuss your project, please contact Covet.



Covet International  
 27 / 131 Hyde St, Yarraville VIC 3013  
 t: +613 9398 8128 e: info@covet.com.au  
 w: covet.com.au

Title: **EVER ART WOOD® EXPRESS  
 & AC EXPRESS  
 WINDOW JAMB FLASHING**

Scale: 1:5 Rev: A  
 Dwg No: **AE-DT-W1**



USE MINIMUM 1.15mm BMT  
 15x50mm TOP HATS @ 600mm  
 CENTRES

**DETAIL - W1  
 (WINDOW JAMB FLASHING)**

(\*) PROCTOR MEMBRANE CAN BE  
 INSTALLED BEHIND OR IN FRONT  
 OF TOPHAT SUB-STRUCTURE



The content contained within this document remains the intellectual property of Architectural Cladding Pty Ltd, may not be reproduced without consent, and subject to copyright.

A collaboration between

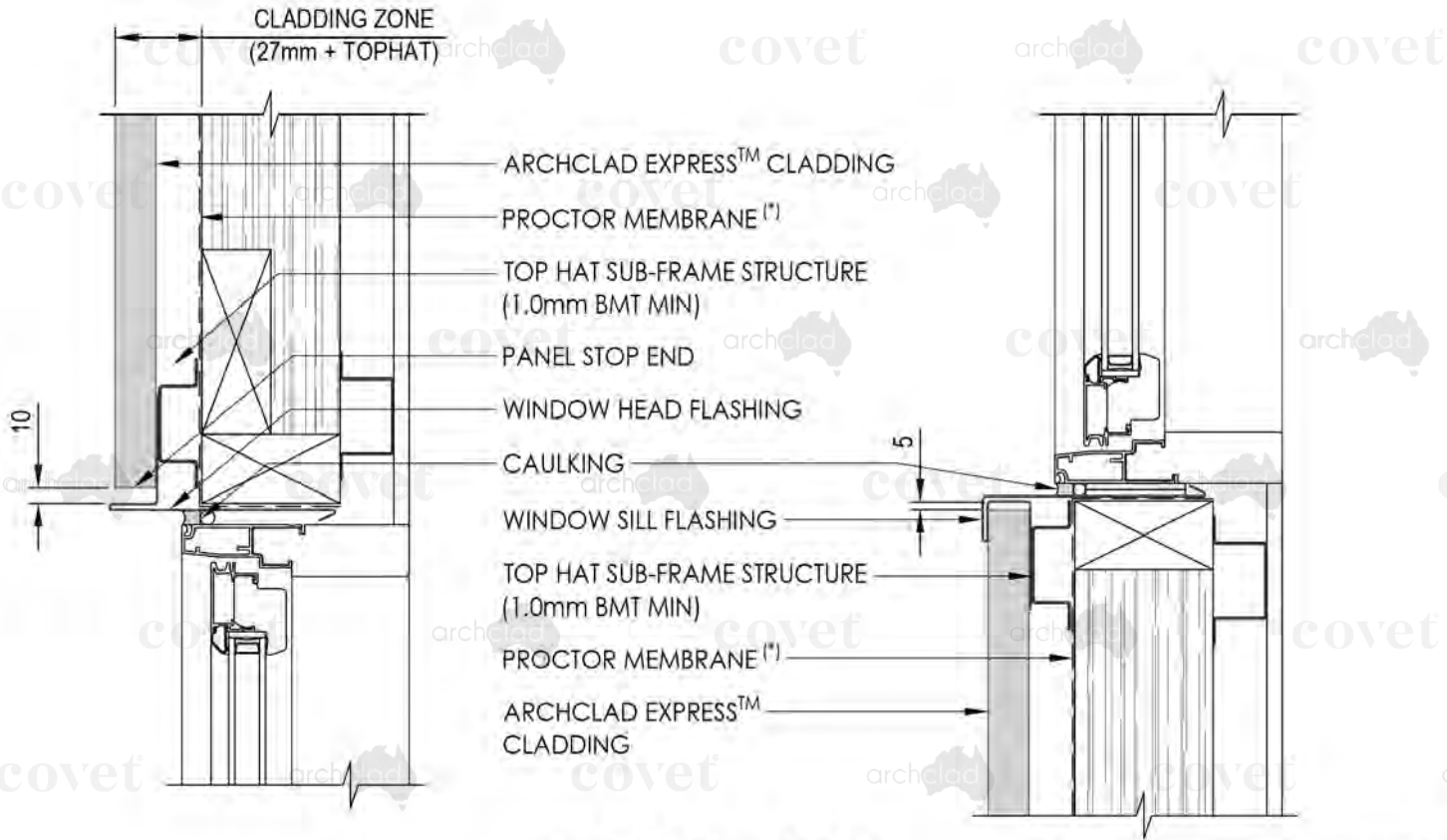




Covet International  
 27 / 131 Hyde St, Yarraville VIC 3013  
 t: +613 9398 8128 e: info@covet.com.au  
 w: covet.com.au

Title: **EVER ART WOOD® EXPRESS  
 & AC EXPRESS  
 WINDOW HEAD & SILL FLASHING**

Scale: 1:5 Rev: A  
 Dwg No: **AE-DT-W2**



**DETAIL - W2  
 (WINDOW HEAD & SILL FLASHING)**

(\* ) PROCTOR MEMBRANE CAN BE INSTALLED BEHIND OR IN FRONT OF TOPHAT SUB-STRUCTURE

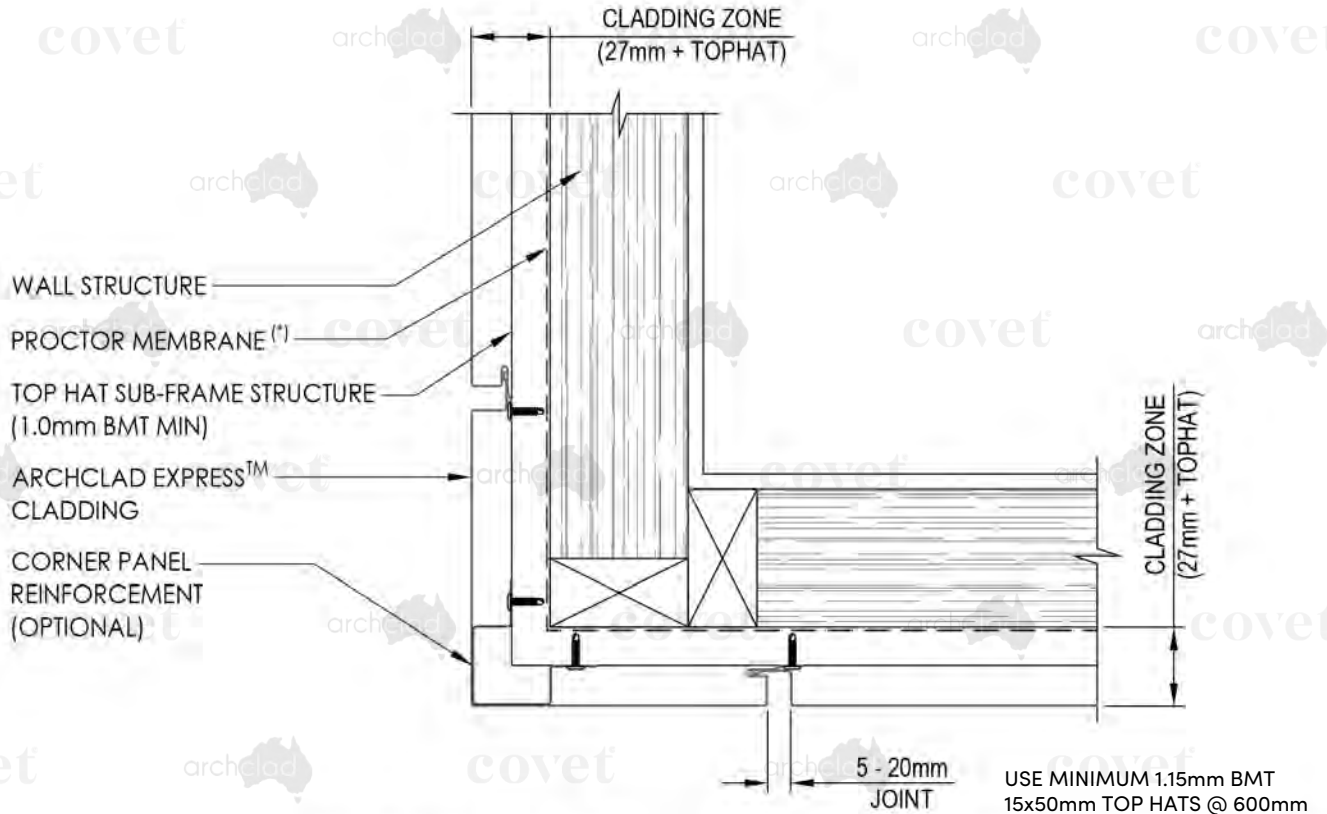




Covet International  
 27 / 131 Hyde St, Yarraville VIC 3013  
 t: +613 9398 8128 e: info@covet.com.au  
 w: covet.com.au

Title: **EVER ART WOOD® EXPRESS  
 & AC EXPRESS  
 WALL - FOLDED CORNER PANEL**

Scale: 1:5 Rev: A  
 Dwg No: **AE-DT-W3**



**DETAIL - W3  
 (WALL - FOLDED CORNER PANEL - PLAN)**

(\* ) PROCTOR MEMBRANE CAN BE INSTALLED BEHIND OR IN FRONT OF TOPHAT SUB-STRUCTURE



The content contained within this document remains the intellectual property of Architectural Cladding Pty Ltd, may not be reproduced without consent, and subject to copyright.

A collaboration between

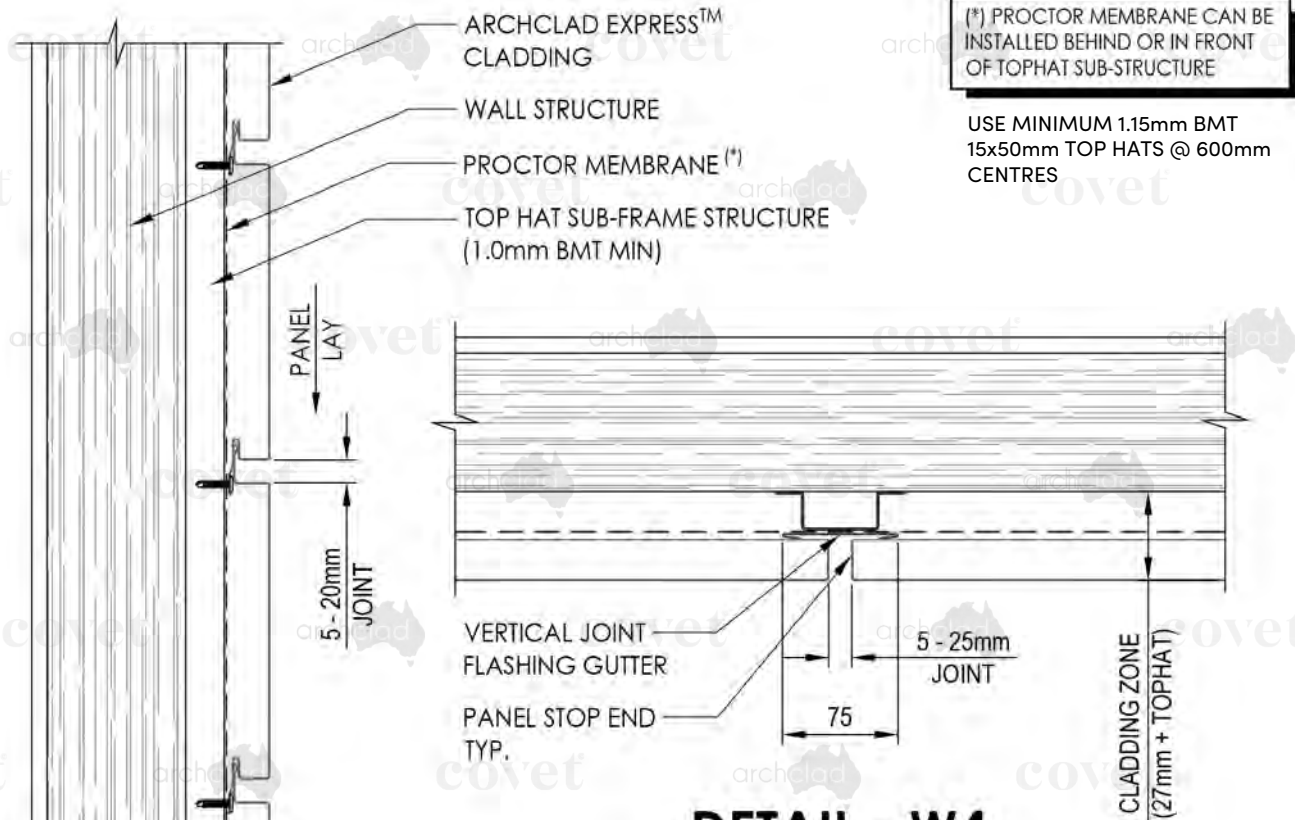




Covet International  
 27 / 131 Hyde St, Yarraville VIC 3013  
 t: +613 9398 8128 e: info@covet.com.au  
 w: covet.com.au

Title: **EVER ART WOOD® EXPRESS  
 & AC EXPRESS**  
**HORIZONTAL WALL PANEL  
 VERTICAL JOINT FLASHING**

Scale: 1:5 Rev: A  
 Dwg No: **AE-DT-W4**



**SECTION A-A**

**DETAIL - W4  
 (HORIZONTAL WALL PANEL  
 VERTICAL JOINT FLASHING - PLAN)**



The content contained within this document remains the intellectual property of Architectural Cladding Pty Ltd, may not be reproduced without consent, and subject to copyright.

A collaboration between

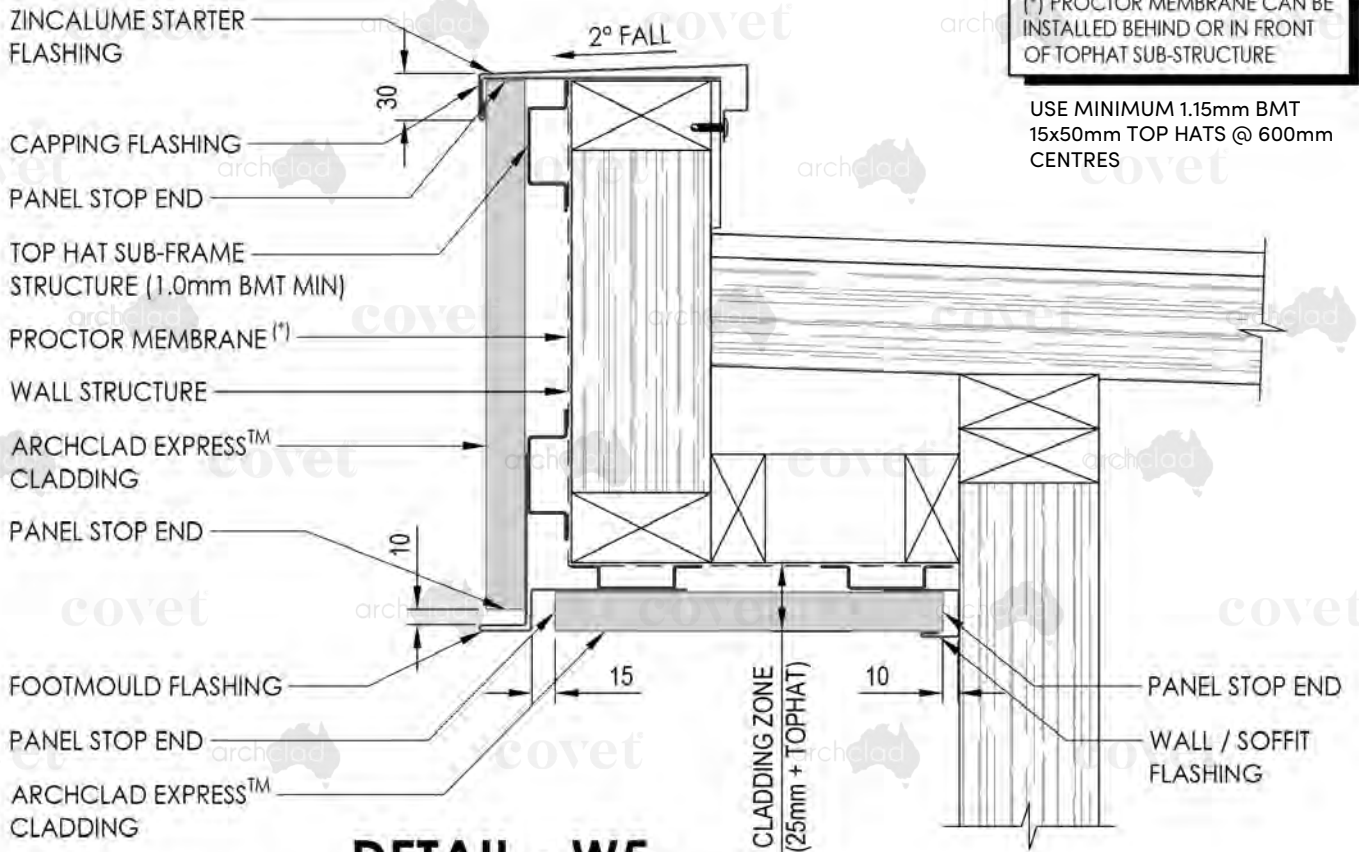




Covet International  
 27 / 131 Hyde St, Yarraville VIC 3013  
 t: +613 9398 8128 e: info@covet.com.au  
 w: covet.com.au

Title: **EVER ART WOOD® EXPRESS  
 & AC EXPRESS  
 FASCIA/SOFFIT PANEL FLASHING**

Scale: 1:5 Rev: A  
 Dwg No: **AE-DT-WS**



(\*) PROCTOR MEMBRANE CAN BE INSTALLED BEHIND OR IN FRONT OF TOPHAT SUB-STRUCTURE

USE MINIMUM 1.15mm BMT  
 15x50mm TOP HATS @ 600mm CENTRES

**DETAIL - W5  
 (FASCIA / SOFFIT PANEL FLASHING)**



The content contained within this document remains the intellectual property of Architectural Cladding Pty Ltd, may not be reproduced without consent, and subject to copyright.

A collaboration between



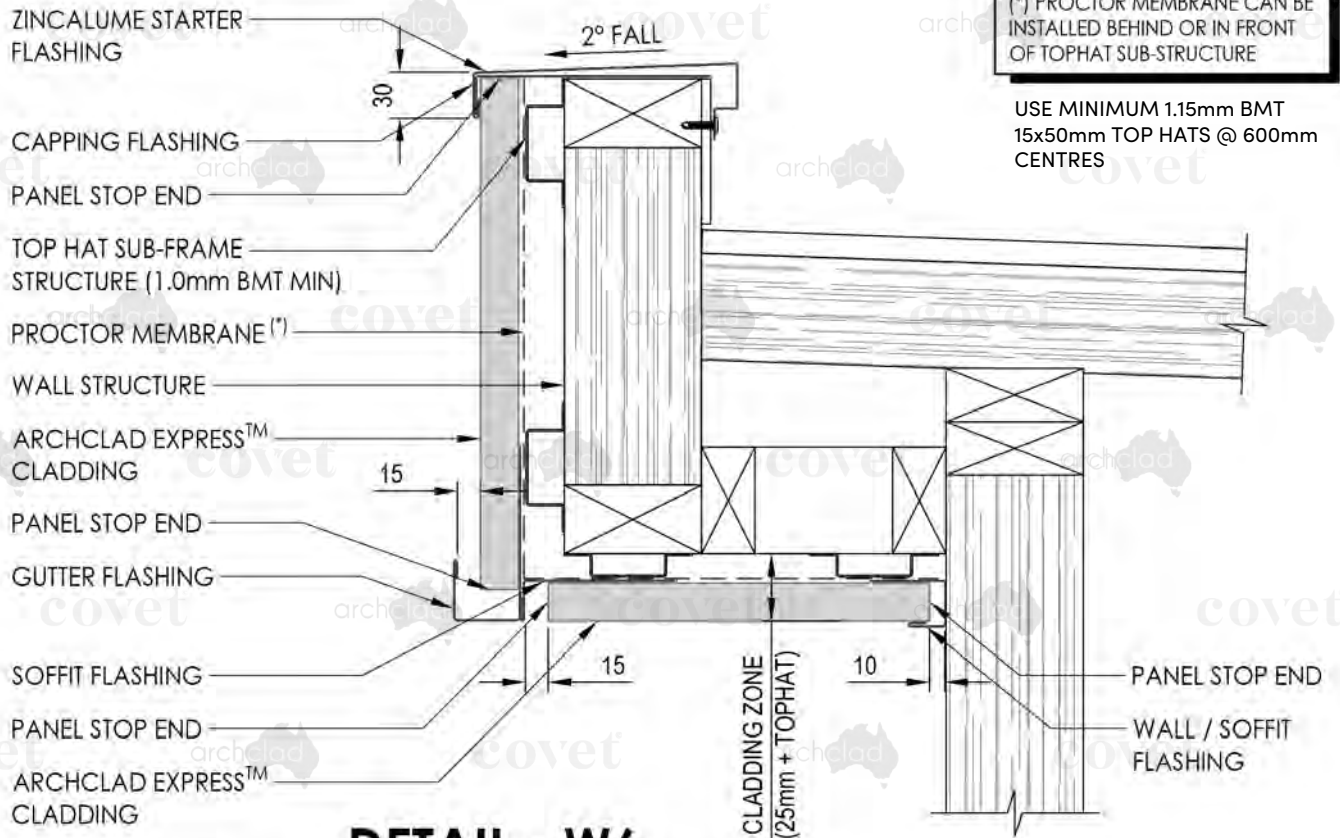




Covet International  
 27 / 131 Hyde St, Yarraville VIC 3013  
 t: +613 9398 8128 e: info@covet.com.au  
 w: covet.com.au

Title: **EVER ART WOOD® EXPRESS  
 & AC EXPRESS  
 WALL BASE TRIM - GUTTER FLASHING**

Scale: 1:5 Rev: A  
 Dwg No: **AE-DT-W6**



**DETAIL - W6  
 (WALL BASE TRIM - GUTTER FLASHING)**



The content contained within this document remains the intellectual property of Architectural Cladding Pty Ltd, may not be reproduced without consent, and subject to copyright.

A collaboration between

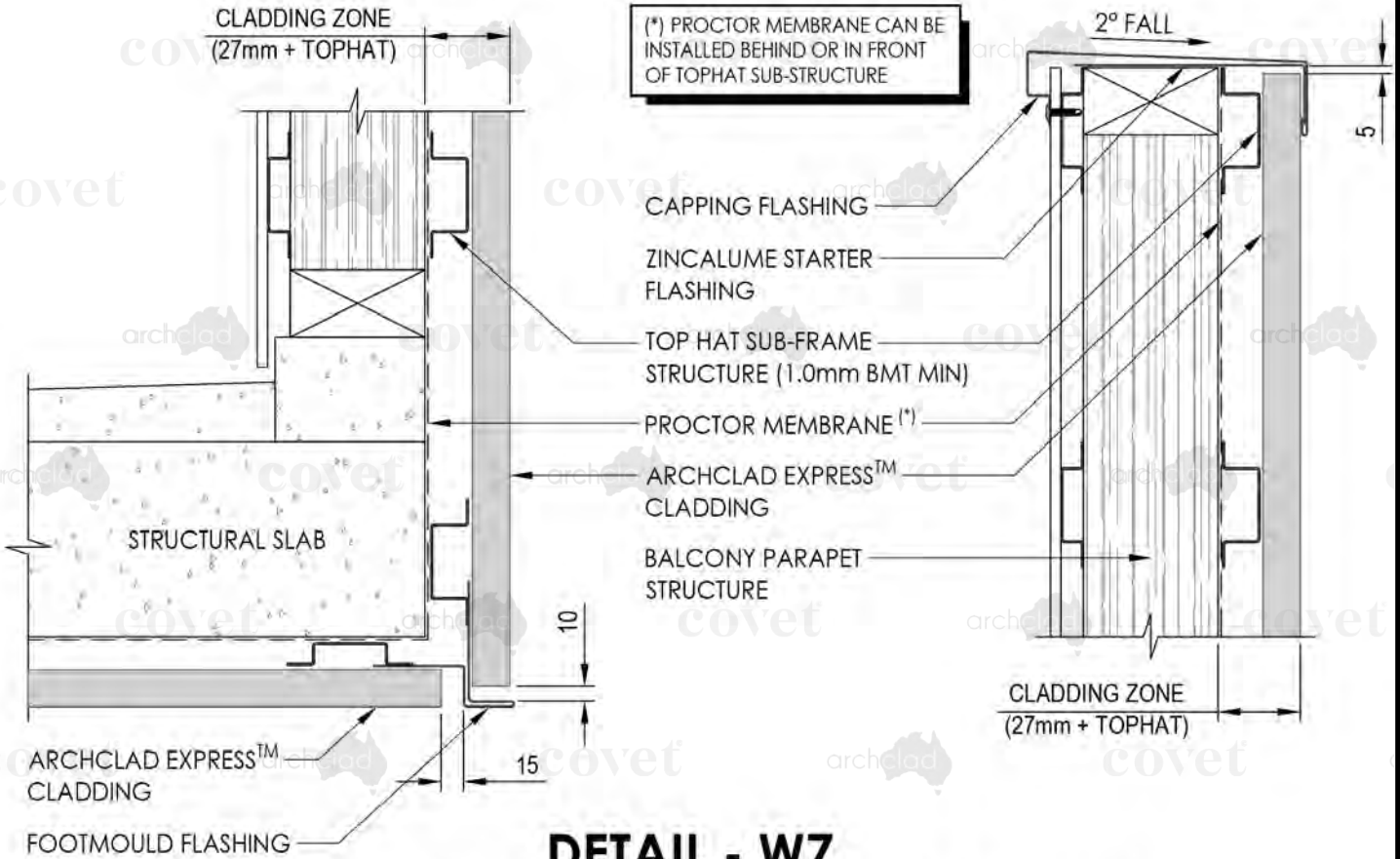




Covet International  
 27 / 131 Hyde St, Yarraville VIC 3013  
 t: +613 9398 8128 e: info@covet.com.au  
 w: covet.com.au

Title: **EVER ART WOOD® EXPRESS  
 & AC EXPRESS  
 BALCONY PARAPET /  
 SOFFIT CLADDING FLASHING**

Scale:	Rev:
1:5	A
Dwg No:	
<b>AE-DT-W7</b>	



## DETAIL - W7

(BALCONY PARAPET / SOFFIT CLADDING FLASHING)



The content contained within this document remains the intellectual property of Architectural Cladding Pty Ltd, may not be reproduced without consent, and subject to copyright.

A collaboration between

